

SCIENCE

Student Book

▶ **1st Grade** | Unit 5

PLANTS

SCIENCE 105

Introduction |1

1. Plants in Nature	2
Big Plants 4	Special Plants 12
Small Plants 8	Self Test 1 16
2. Plants on a Farm	18
Grain Plants 20	Fruits 24
Vegetables 22	Self Test 2 26
3. Plants at Home	28
Garden Plants 28	Self Test 3 32
House Plants 30	

LIFEPAC Test |Pull-out



804 N. 2nd Ave. E.
Rock Rapids, IA 51246-1759

© MCMXCVI by Alpha Omega Publications, Inc.
All rights reserved.
LIFEPAC is a registered trademark of Alpha
Omega Publications, Inc.

All trademarks and/or service marks referenced in this
material are the property of their respective owners. Alpha
Omega Publications, Inc. makes no claim of ownership to any
trademarks and/or service marks other than their own and their
affiliates, and makes no claim of affiliation to any companies
whose trademarks may be listed in this material, other than
their own.

Author:
Phyllis A. MacDonald, M.Ed.

Editor:
Mary Ellen Quint, M.A.

Consulting Editor:
Harold Wengert, Ed.D.

Revision Editor:
Alan Christopherson, M.S.

Media Credits:
Page 1: © olegganko, iStock, Thinkstock; **2, 3, 12,**
17, 21, 32: © Erhan telik, Hemera, Thinkstock.

PLANTS



Plants grow everywhere.

Plants grow
in nature,
on a farm,
in a garden,
and in the house.

God helps plants grow.
A farmer helps plants grow.
You can help plants grow, too.

Objectives

Read these objectives. They will tell what you will be able to do when you have finished this LIFEPAK®.

1. I can tell about some plants that grow in nature.
2. I can tell about some plants that grow on a farm.
3. I can tell about some plants that grow at home.
4. I can tell what plants need to live and grow.

1. PLANTS IN NATURE

How do trees get planted
Out there where no men go?
Who plants all the cactus?
Who makes the seaweed grow?

What makes all the meadow grass
Come up each year in spring?
We must thank God.
It was His plan.
He started everything.





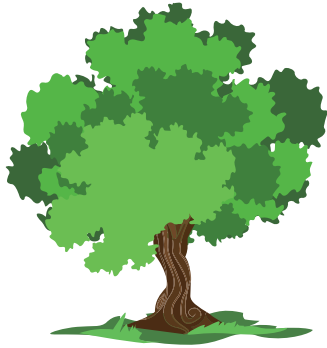
Write the names of plants in nature.

cactus

grass

tree

seaweed









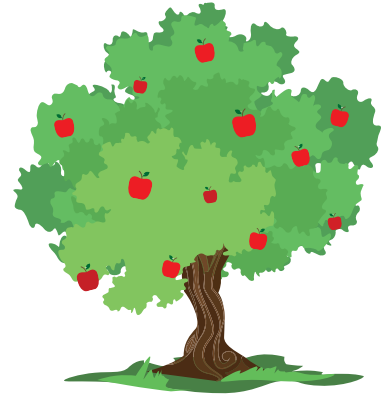
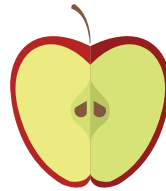
Big Plants

Some plants are big.

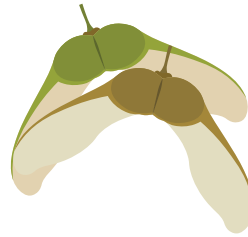
Trees are big plants.

Trees grow from seeds.

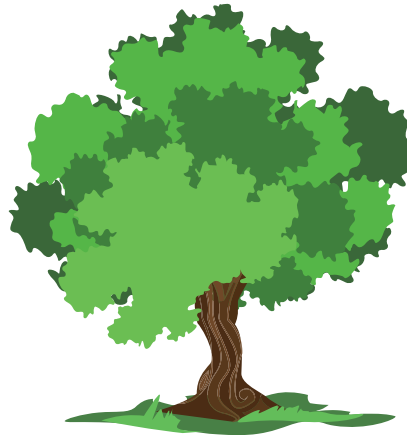
Apple tree seeds are in apples.



Maple tree seeds are in "spinners."



Oak tree seeds are in acorns.



Can you tell about the seeds of a tree you know?
Can you tell what part of a tree is in the soil?



Follow the dots to see what is in the tree.



Color the picture.



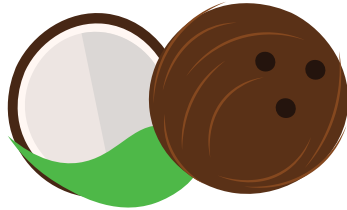
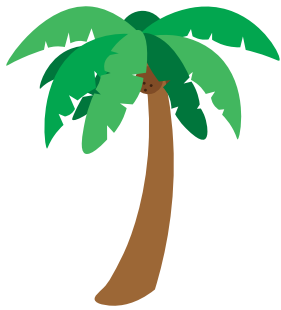
Trees are homes for some animals.
What might live in a tree?

Some trees grow in special places.

Palm trees grow where it is warm.

Some palm trees bear coconuts.

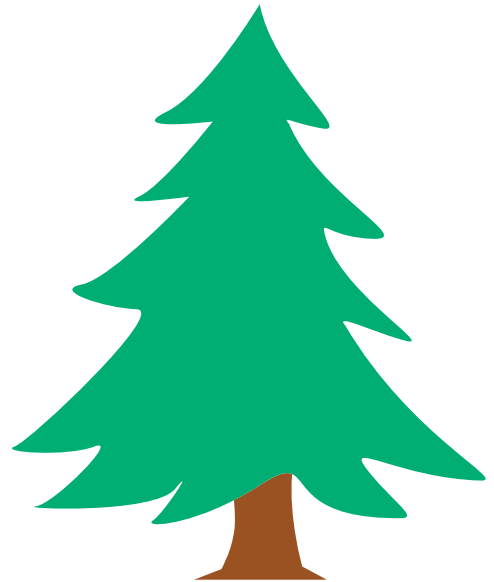
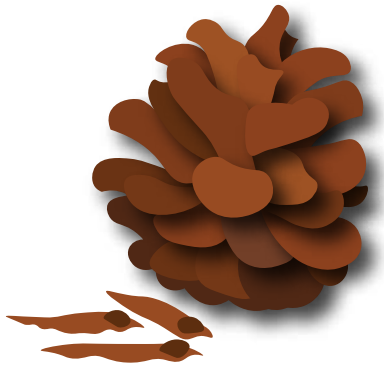
Other palm trees bear dates.



Most pine trees grow where it is cool.

Pine trees bear pine cones.

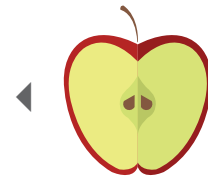
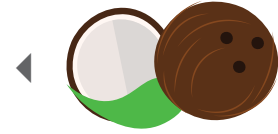
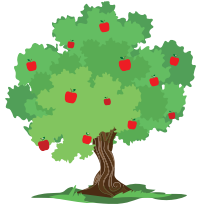
Pine seeds hide in the cones.



What do trees need to live and grow?
Who gives the trees what they need?



Match the seed with the tree.



Trace three words that tell what trees need.

water sunlight soil



Write the words in your writing tablet.

Small Plants

Some plants are small.
Grass is a small plant.
Grass grows in many places.
Grass grows from seeds.



It grows on the plains.
Buffalo eat grass.
It grows in mountain meadows.
Mountain goats eat grass.

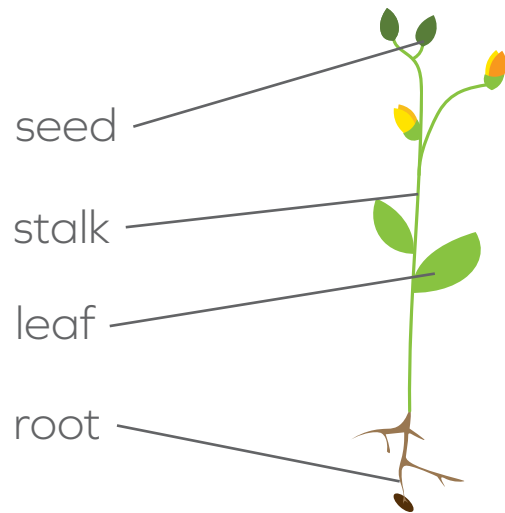


It grows near lakes and rivers.
Deer eat grass.



How do grass seeds get planted?

Grass has green leaves.
 Grass seeds are very small.
 They grow on stalks
 from the grass plant.
 Grass has roots in the soil.
 Grass needs sunlight and water.



Write the words to finish the sentences.

seeds

leaf

stalk

roots

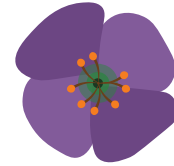
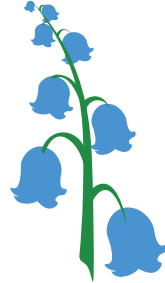
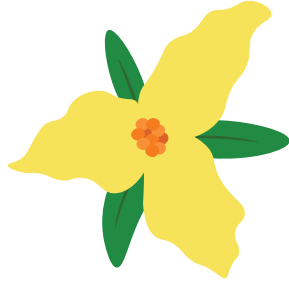
A grass _____ is green.

Grass _____ grow on a

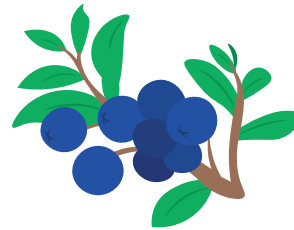
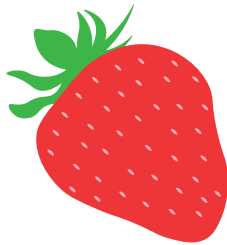
Grass _____ are in the soil.

Other plants are small.

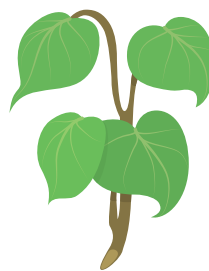
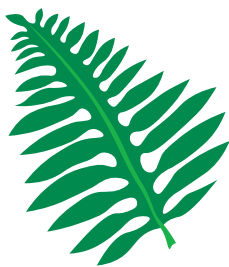
Wild flowers grow on small plants.



Wild berries grow on small plants.



Ferns and vines are small plants, too.



Can you tell what small plants need?

SELF TEST 1

Each answer = 1 point

Write the word.

sunlight	grow	water	seeds
soil	plant	tree	everywhere

Plants grow _____ .

God helps plants _____ .

A _____ is a big plant.

Grass is a small _____ .

Plants grow from _____ .

Plants need _____ ,

_____ , and good

_____ .



804 N. 2nd Ave. E.
Rock Rapids, IA 51246-1759

800-622-3070
www.aop.com

SCI0105 - Feb '17 Printing

ISBN 978-0-86717-705-3



9 780867 177053